



biologics

product catalog



BIOHORIZONS®
SCIENCE • INNOVATION • SERVICE

BIOHORIZONS®



global leader for biologic based solutions

BioHorizons commitment to science, innovation and service has helped us become one of the fastest growing companies in the dental industry.



highest quality standards

BioHorizons partners with national tissue banks who take extraordinary measures to ensure the recovery and processing of all tissue meets or exceeds the guidelines set forth by the AATB and FDA.



clinically proven

BioHorizons is committed to developing evidence-based and scientifically proven products. With over 245 publications, our comprehensive biologics product portfolio has proven results for a wide range of soft and hard tissue applications.



novel solutions

BioHorizons has a history of identifying and developing game-changing products to enhance practices' clinical outcomes. This commitment started in 2000 when BioHorizons introduced AlloDerm™, the first soft tissue augmentation product in the dental industry.



partner for success

BioHorizons understands the importance of providing excellent service. Our global network of professional representatives and our highly trained customer care support team are well equipped to meet the needs of patients and clinicians.

table of contents

Biologics

Bone Grafting Options

MinerOss® Blend	2
MinerOss® Putty	2
MinerOss® Cancellous	3
MinerOss® Cortical	3
MinerOss® Block Allograft	4
Grafton® DBM	4
MinerOss® X	5
MinerOss® XP	6
Bone Grafting Applications	7

Soft Tissue Augmentation

AlloDerm™ Regenerative Tissue Matrix (RTM)	8
AlloDerm GBR™ Regenerative Tissue Matrix (RTM)	9
Soft Tissue Augmentation Applications	9

Resorbable Wound Dressings

BioPlug	10
BioStrip	10
Resorbable Wound Dressing Applications	10

Dental Membranes

Mem-Lok® Resorbable Collagen Membrane (RCM)	11
Mem-Lok® Pliable	12
Mem-Lok® Pericardium	13
Cytoplast™ Titanium-Reinforced Dense PTFE Membrane	14-15
Cytoplast™ Dense PTFE Membrane	16
Dental Membrane Applications	16

Instruments & Ancillary Products

Cytoplast™ PTFE Sutures	17
Hu-Friedy® Sutures	18
Allen Oral Plastic Surgery Kit	19
Basic Hard Tissue Grafting Kit	20
Allen/Johnston Suture Removal Kit	21
Manual Tack Driver	21
AutoTac® System Kit & Re-Order Items	21
Crestal-Lift-Control Basic Kit	21
Bone Fixation Screw Kit & Re-Order Items	22
References	24
Ordering & Warranty Information	25

BONE GRAFTING OPTIONS

MinerOss® family of allografts



MinerOss® Blend

In 2004, BioHorizons pioneered the combination of mineralized cortical and cancellous chips with an optimal size range. Today, MinerOss® Blend is the most popular allograft blend in the U.S. market. MinerOss® Blend forms an osteoconductive scaffold for volume enhancement and effective site development to place dental implants.

applications include¹

- extraction site grafting
- periodontal defects
- lateral and vertical ridge augmentation
- sinus grafting
- peri-implant defects
- composite grafting with Grafton® DBM

MinerOss® Putty

MinerOss® Putty is 100% allograft materials offering a proprietary combination of demineralized cortical fibers with mineralized cortical & cancellous chips. MinerOss® Putty is engineered for enhanced regenerative capacity compared to particulate DBM.

applications include¹

- ridge and sinus augmentation
- peri-implant defects
- extraction socket grafting
- periodontal defects

ordering information

MinerOss® Blend
(Particle size range: 600µm - 1250µm)

MIN-CC0.5	0.5cc Jar
MIN-CC1.0	1.0cc Jar
MIN-CC2.5	2.5cc Jar

MinerOss® Putty
(100% pure allograft)

MIN-PT0.5	0.5cc Syringe
MIN-PT1.0	1.0cc Syringe
MIN-PT2.5	2.5cc Syringe
MIN-PT5.0	5.0cc Syringe

BONE GRAFTING OPTIONS

MinerOss® family of allografts



applications include¹

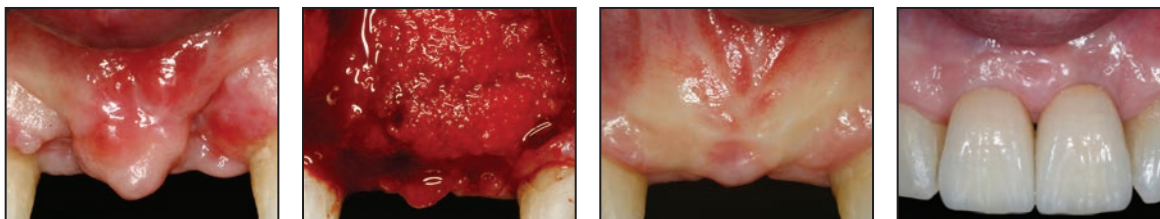
- ridge and sinus augmentation
- socket grafting
- periodontal defects
- grafting for implant placement

MinerOss® Cancellous

MinerOss® Cancellous is a mineralized allograft cancellous bone particle. The osteoconductive properties along with the fast remodeling time allow for rapid revascularization and predictable results. MinerOss® Cancellous provides ideal handling characteristics for regeneration procedures of all sizes.

"MinerOss® Cancellous is an outstanding choice for particulate grafting. Its exceptional handling and predictable results have proven to be an asset in my practice."

Dr. Bach Le, DDS, MD, FICD, FACD



MinerOss® Cancellous case images courtesy of Dr. Bach Le

MinerOss® Cortical

The strength of a cortical allograft is ideal in procedures where structural integrity and long lasting stability is needed for proper regeneration. MinerOss® Cortical is available in 300-1000 microns to allow for easy handling and fast hydration.

ordering information

MinerOss® Cancellous
(Particle size range: 300µm -1000µm)

MIN-CAN0.5	0.5cc Jar
MIN-CAN1.0	1.0cc Jar
MIN-CAN2.5	2.5cc Jar

MinerOss® Cortical
(Particle size range: 300µm -1000µm)

MIN-COR0.5	0.5cc Jar
MIN-COR1.0	1.0cc Jar
MIN-COR2.5	2.5cc Jar

BONE GRAFTING OPTIONS

MinerOss® family of allografts

MinerOss® Block Allograft

MinerOss® Block Allograft is pre-hydrated and ready for immediate implantation using patent pending Aqueous Solution Preservation (ASP). MinerOss® Block Allograft restores bone volume and provides an alternative to harvesting an autogenous block graft from the patient therefore eliminating the need for a second surgical procedure.

applications include¹

- bone remodeling
- block grafting procedures
- bony defects

ordering information

MO-BLH10	15mm x 10mm x 10mm
MO-BLH15	15mm x 10mm x 15mm



Grafton® DBM

Grafton® DBM incorporates potent DBF (demineralized bone fibers) technology to ensure superior osteoconductivity. With more than 20 years of clinical history, Grafton DBM gives you the ability to preserve bone height and width.² Proven in published, peer reviewed clinical studies, Grafton DBM in multiple forms gives clinicians options for bone grafting applications.³

- indicated as a bone void filler, bone graft extender, and bone graft substitute⁴
- available in multiple forms to give the desired handling characteristics for multiple clinical indications

ordering information

Grafton® DBM Matrix Plugs (3D network of DBM fibers)

GR-MTX-1	8mm x 8mm x 10mm Plugs
-----------------	------------------------

Grafton® DBM Putty in a Syringe (Network of DBM fibers)

GR-SYR.25-1	0.25cc Syringe
--------------------	----------------

Grafton® DBM Putty in a Jar (Network of DBM fibers)

GR-PT.5	0.5cc Jar
----------------	-----------

GR-PT1	1.0cc Jar
---------------	-----------

GR-PT2.5	2.5cc Jar
-----------------	-----------

Grafton® DBM Flex Sheet (Pressed DBM fibers)

GR-FL1.5	1.5cm x 1.5cm Sheet
-----------------	---------------------



Matrix Plugs

applications include¹

- extraction socket grafting
- ridge and sinus augmentation
- bone augmentation around implants
- bony defects
- composite grafting with MinerOss®
- filling of periodontal defects

BONE GRAFTING OPTIONS

MinerOss® family of xenografts

MinerOss® X

Available in a variety of options, MinerOss® X is an anorganic bovine bone mineral matrix that is physically and chemically comparable to the mineral structure of human bone. The MinerOss® X family of xenografts† can be used in a wide variety of grafting applications.

applications include¹

- ridge and sinus augmentation
- extraction socket grafting
- infrabony periodontal defects
- grafting for implant placement



MinerOss® X Particulate

MinerOss® X Particulate is available in either cancellous or cortical form. The complex trabecular architecture and natural consistency allow for ideal bone formation at the defect site.

MinerOss® X Collagen

MinerOss® X Collagen is a combination of 95% anorganic cancellous bovine bone mineral and approximately 5% highly purified Type I collagen. This block form allows for convenience during placement and is an ideal solution for many applications.

MinerOss® X Syringe

MinerOss® X Syringe is cancellous particulate pre-loaded into a delivery syringe to assist with optimal placement at the defect site.

ordering information

MinerOss® X Cancellous

(Particle size ranges from 250-1000µm)

MINX-CAN0.25GR	0.25g/0.5cc
MINX-CAN0.5GR	0.5g/1.0cc
MINX-CAN1.0GR	1.0g/2.0cc
MINX-CAN2.0GR	2.0g/4.0cc

MinerOss® X Collagen

MINX-COLLAGEN-SM	6x7x8mm
MINX-COLLAGEN-MED	8x9x9mm
MINX-COLLAGEN-LG	10x11x12mm

MinerOss® X Cortical

(Particle size ranges from 500-1000µm)

MINX-COR0.25GR	0.25g/0.4cc
MINX-COR0.5GR	0.5g/0.8cc
MINX-COR1.0GR	1.0g/1.6cc
MINX-COR2.0GR	2.0g/3.2cc

MinerOss® X Syringe

(Particle size ranges from 250-1000µm)

MINX-SYR0.25	0.25cc
MINX-SYR0.5	0.5cc

†Family of xenograft-derived bone graft matrices.

BONE GRAFTING OPTIONS

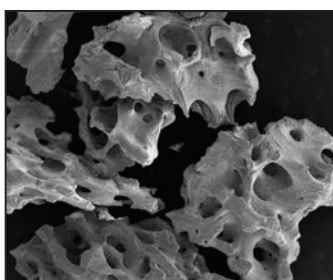
MinerOss® family of xenografts

MinerOss® XP

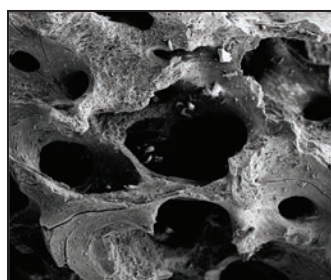
Highly porous anorganic porcine bone mineral matrix designed for hard tissue grafting applications. Increased porosity allows for optimal osteoconductivity and adequate space for new bone deposition.

applications include¹

- ridge and sinus augmentation
- extraction socket grafting
- infrabony periodontal defects
- grafting for implant placement



SEM at 25x



SEM at 75x

SEM images of MinerOss XP illustrate a structure that is similar to a natural bone mineral which is highly porous to provide more space for new bone deposition and a rough surface which facilitates cell adhesion and spread for bone in-growth.⁵

ordering information

MinerOss® XP Cancellous (Particle size ranges from 250-1000µm)

MINXP-CAN0.5SM	0.5cc Jar
MINXP-CAN1.0SM	1.0cc Jar
MINXP-CAN2.0SM	2.0cc Jar
MINXP-CAN4.0SM	4.0cc Jar

MinerOss® XP Cancellous (Particle size ranges from 1000-2000µm)

MINXP-CAN1.0LG	1.0cc Jar
MINXP-CAN2.0LG	2.0cc Jar

MinerOss® XP Syringe (Particle size ranges from 250-1000µm)

MINXP-SYR0.25	0.25cc Syringe
MINXP-SYR0.5	0.5cc Syringe

BONE GRAFTING OPTIONS

Bone Grafting Applications

	periodontal defects	4-wall extraction sockets	3-wall extraction sockets	sinus augmentation	ridge augmentation	grafting for implant placement	block grafting
MinerOss® Blend	✓	✓	✓	✓	✓	✓	
MinerOss® Putty	✓			✓	✓	✓	
MinerOss® Cancellous	✓	✓	✓	✓	✓	✓	✓
MinerOss® Cortical			✓	✓	✓		
MinerOss® Block Allograft							✓
Grafton® DBM Matrix Plug	✓	✓	✓	✓			
Grafton® DBM Matrix Putty	✓	✓	✓	✓			
MinerOss® X Cancellous	✓	✓	✓	✓	✓	✓	✓
MinerOss® X Cortical		✓	✓	✓	✓	✓	
MinerOss® X Syringe	✓	✓	✓	✓	✓	✓	✓
MinerOss® X Collagen	✓	✓	✓	✓			
MinerOss® XP Cancellous	✓	✓	✓	✓	✓	✓	✓
MinerOss® XP Syringe	✓	✓	✓	✓	✓	✓	✓

SOFT TISSUE AUGMENTATION

AlloDerm™ Regenerative Tissue Matrix

Since its introduction to dentistry in 1997, AlloDerm™ Regenerative Tissue Matrix (RTM) has been a widely accepted acellular dermal matrix (ADM) for soft tissue applications. AlloDerm™ RTM supports tissue regeneration by allowing rapid revascularization, white cell migration, and cell population – ultimately being transformed into host tissue for a strong, natural repair. (Thickness ranges from 0.9-1.6mm)

- most published ADM in implant dentistry
- reduced post-operative complications as shown in trials⁶
- randomized clinical trials indicated no statistical difference to connective tissue for recession coverage^{7,8}

applications include¹

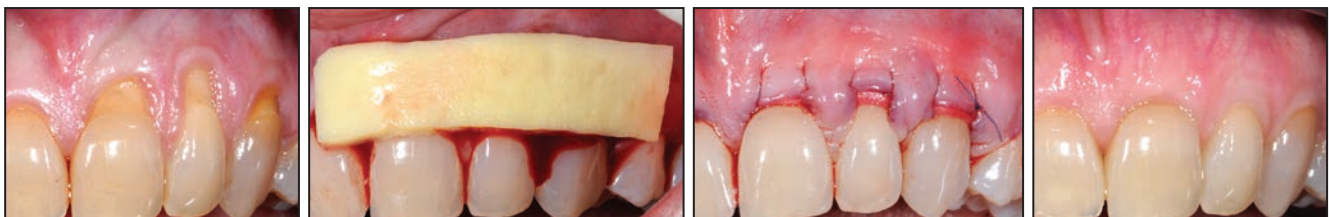
- root coverage
- gingival augmentation
- soft tissue ridge augmentation
- soft tissue augmentation around implants

ordering information

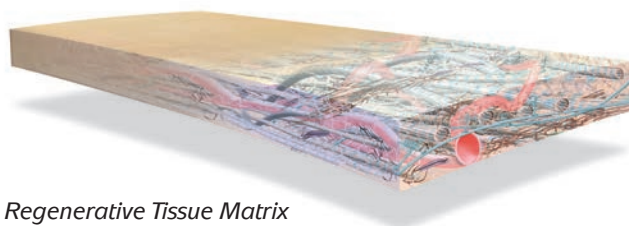
ALLODERM 1x1	AlloDerm™ RTM 1cm x 1cm
ALLODERM 1x2	AlloDerm™ RTM 1cm x 2cm
ALLODERM 1x4	AlloDerm™ RTM 1cm x 4cm
ALLODERM 2x4	AlloDerm™ RTM 2cm x 4cm



AlloDerm™ RTM can be stored at room temperature.¹

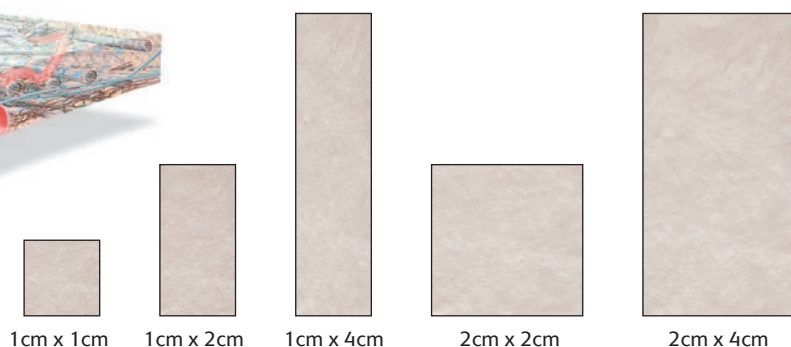


AlloDerm™ RTM case images courtesy of Dr. Edward P. Allen, Dallas, Texas



Regenerative Tissue Matrix

Complex acellular heterogeneous scaffold and blood vessel architecture; dehydrated and ready to implant



AlloDerm™ RTM and AlloDerm GBR™ RTM size reference

SOFT TISSUE AUGMENTATION

AlloDerm GBR™ Regenerative Tissue Matrix

AlloDerm GBR™ Regenerative Tissue Matrix (RTM) is manufactured utilizing the same proprietary process used for AlloDerm Regenerative Tissue Matrix (RTM), however AlloDerm GBR™ RTM is used as an effective barrier membrane that transitions into the patient's own tissue.⁹ (Thickness ranges from 0.5-0.9mm)

- benefits soft tissue quality and serves as a barrier membrane⁹
- less technique sensitive due to its ability to be exposed during healing¹⁰
- demonstrated alternative to bioabsorbable membranes¹¹

applications include¹

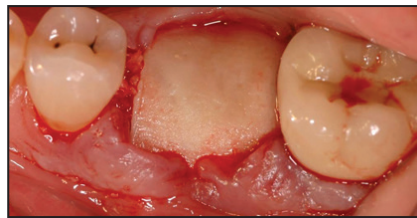
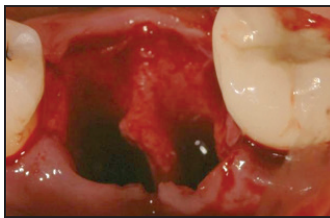
- graft protection and containment
- flap extender to achieve primary closure

ordering information

AL-GBR-1x1	AlloDerm GBR™ RTM 1cm x 1cm
AL-GBR-1x2	AlloDerm GBR™ RTM 1cm x 2cm
AL-GBR-1x4	AlloDerm GBR™ RTM 1cm x 4cm
AL-GBR-2x2	AlloDerm GBR™ RTM 2cm x 2cm
AL-GBR-2x4	AlloDerm GBR™ RTM 2cm x 4cm



AlloDerm GBR™ RTM can be stored at room temperature.¹



AlloDerm GBR™ RTM case images courtesy of Dr. Lewis C. Cummings, Kingwood, Texas

Soft Tissue Augmentation Applications

	root coverage	gingival augmentation	soft tissue augmentation around implants	soft tissue ridge augmentation	graft protection & containment	flap extender to achieve primary closure
AlloDerm™ Regenerative Tissue Matrix (RTM)	✓	✓	✓	✓		
AlloDerm GBR™ Regenerative Tissue Matrix (RTM)	✓				✓	✓

RESORBABLE WOUND DRESSINGS

BioPlug & BioStrip

BioPlug and BioStrip are collagen wound dressings designed to absorb blood or fluids and protect the site for optimal regeneration.

- fully resorbed in 10-14 days
- quantity of 10 units per box
- packaged sterile

BioPlug

applications include¹

- extraction sockets
- biopsy sites



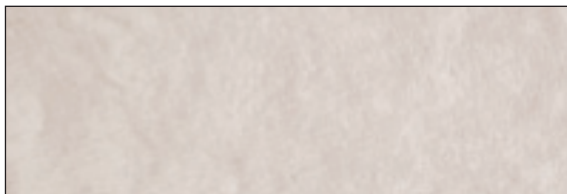
1 cm x 2 cm

BioPlug size reference

BioStrip

applications include¹

- closure of grafted sites
- dressing of minor wounds



2.5 cm x 7.5 cm

BioStrip size reference



ordering information

BioPlug

BIOPLUG

Pack of 10

BioStrip

BIOSTRIP

Pack of 10

Resorbable Wound Dressing Applications

	graft protection & containment	ridge preservation	closure of grafted sites
BioPlug	✓		
BioStrip		✓	✓

Mem-Lok® Resorbable Collagen Membrane (RCM)

Mem-Lok® RCM is engineered from highly purified type I collagen to provide an increased resorption period and ensure optimal bone regeneration. Clinicians can be confident that Mem-Lok® RCM will serve as an effective barrier membrane for bone regeneration.

- predictable resorption period of 26 – 38 weeks¹²
- macromolecular pore size permeability that permits the exchange of essential nutrients during healing
- adapts easily to various bony defects

applications include¹

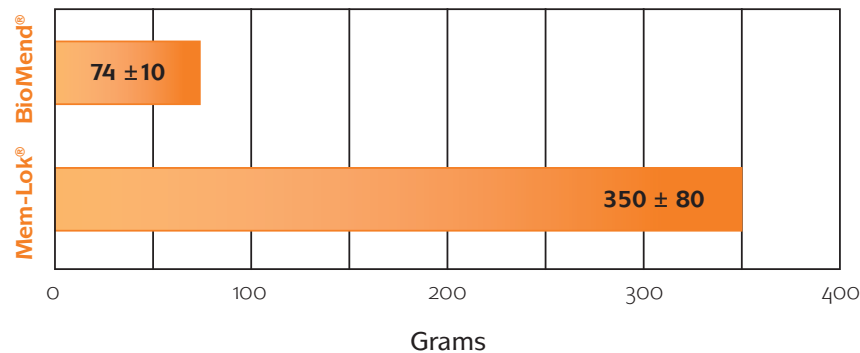
- extraction sockets
- sinus augmentation - sinus window
- ridge preservation
- bone augmentation around implants
- bony defects
- peri-implant bone defect around implants



ordering information

RCM-ML1520	Mem-Lok® Resorbable Collagen Membrane	15mm x 20mm
RCM-ML2030	Mem-Lok® Resorbable Collagen Membrane	20mm x 30mm
RCM-ML3040	Mem-Lok® Resorbable Collagen Membrane	30mm x 40mm

Suture pull-out strength



Dense membrane allows for increased mechanical strength.¹³

DENTAL MEMBRANES

Mem-Lok® Pliable

Mem-Lok® Pliable is a strong, conformable collagen barrier membrane manufactured from highly purified porcine tissue.

- single layer intact collagen
- not side specific
- cell occlusive
- 12-16 week resorption time
- high suture pull-out strength

applications include¹

- extraction sites
- ridge augmentation
- graft containment around immediate implants
- periodontal defects



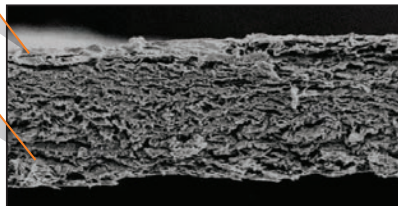
ordering information

PBLE-ML1520	Mem-Lok® Pliable	15mm x 20mm
PBLE-ML2030	Mem-Lok® Pliable	20mm x 30mm
PBLE-ML3040	Mem-Lok® Pliable	30mm x 40mm

Mem-Lok® Pliable

not side specific

dense, uniform
single layer



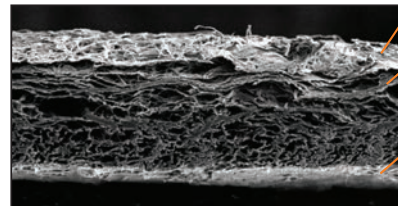
SEM (cross-section) at 50x

Bio-Gide®

fibrous side

lower density

smooth side



SEM (cross-section) at 50x

DENTAL MEMBRANES

Mem-Lok® Pericardium

Mem-Lok® Pericardium is a long lasting, conformable barrier membrane that drapes easily for graft site contours. It has excellent strength and stability for optimal graft site protection.

- tear resistant, can be sutured or tacked
- 5-year shelf life
- can be stored at room temperature¹

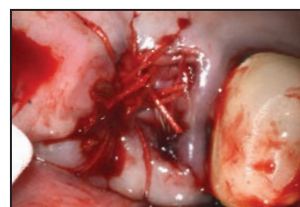
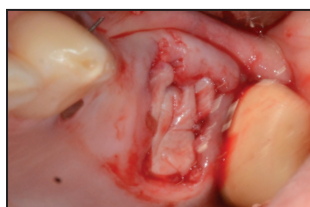
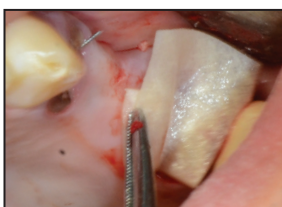
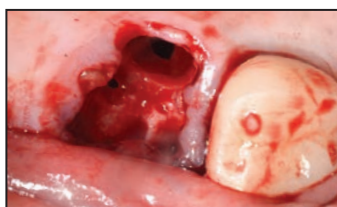
applications include¹

- extraction sites
- ridge augmentation

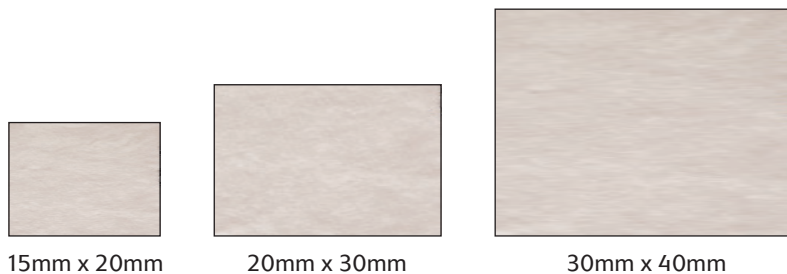


ordering information

PERI-ML1520INT	Mem-Lok® Pericardium	15mm x 20mm
PERI-ML2030INT	Mem-Lok® Pericardium	20mm x 30mm
PERI-ML3040INT	Mem-Lok® Pericardium	30mm x 40mm



Mem-Lok® Pericardium case images courtesy of Dr. Guy Rosenstiel



15mm x 20mm

20mm x 30mm

30mm x 40mm

Mem-Lok® RCM, Mem-Lok® Pliable and Mem-Lok® Pericardium size reference

Cytoplast™ Titanium-Reinforced Dense PTFE Membranes

The traditional frame design, incorporating delicate and strategically-placed titanium "struts", has more than 25 years of clinical history and successful use in guided bone regeneration. Cytoplast™ Ti-250 membranes provide a wide range of coverage solutions for cases involving extraction sites, bony defects, and ridge augmentation. (250 microns thick)

- non-resorbable material allows the clinician to dictate healing time
- passive fit with no memory retention
- lightweight framework is easy to trim and is compliant with overlying soft tissues

ordering information and applications¹

OG-TI250ANL-2	Ti-250 Anterior Narrow (pack of 2)	12mm x 24mm
Coverage of narrow single-tooth extraction sites, especially where one bony wall is missing.		
OG-TI250AS-2	Ti-250 Anterior Singles (pack of 2)	14mm x 24mm
Coverage of single-tooth extraction sites, especially where one or more bony walls are missing.		
OG-TI250ATC-2	Ti-250 Anterior Trans Crestal (pack of 2)	24mm x 38mm
Designed for bony defects between adjacent teeth, including ridge augmentation.		
OG-TI250BL-2	Ti-250 Buccal (pack of 2)	17mm x 25mm
Treatment of large buccal defects.		
OG-TI250PD-2	Ti-250 Posterior Distal (pack of 2)	38mm x 38mm
Designed for large bony defects, including distal extension of the posterior ridge.		
OG-TI250PL-2	Ti-250 Posterior Large (pack of 2)	25mm x 30mm
Suited for treating large bony defects, including ridge augmentation.		
OG-TI250PS-2	Ti-250 Posterior Singles (pack of 2)	20mm x 25mm
Suited for covering posterior extraction sites and limited ridge augmentation.		
OG-TI250PST-2	Ti-250 Posterior Singles T2 (pack of 2)	25mm x 36mm
Designed for grafting extraction sites and limited ridge augmentation.		
OG-TI250PTC-2	Ti-250 Posterior Trans Crestal (pack of 2)	38mm x 38mm
Designed for large bony defects between adjacent teeth, including ridge augmentation.		
OG-TI250XL-2	Ti-250 XL (pack of 2)	30mm x 40mm
Sized to cover very large bony defects, including ridge augmentation. Larger titanium spans more of the PTFE membrane for additional rigidity.		
OG-TI250XLK-2	Ti-250 XLK (pack of 2)	30mm x 40mm
Sized to cover large bony defects, including ridge augmentation. Smaller titanium frame allows for greater versatility when shaping.		

Cytoplast™ Titanium-Reinforced Dense PTFE Membranes



Ti-250 Anterior Narrow
12mm x 24mm



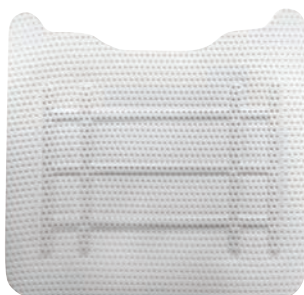
Ti-250 Anterior Singles
14mm x 24mm



Ti-250 Anterior Trans Crestal
24mm x 38mm



Ti-250 Buccal
17mm x 25mm



Ti-250 Posterior Distal
38mm x 38mm



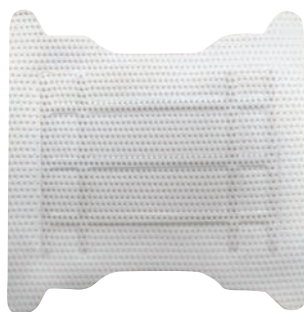
Ti-250 Posterior Large
25mm x 30mm



Ti-250 Posterior Singles
20mm x 25mm



Ti-250 Posterior Singles T2
25mm x 36mm



Ti-250 Posterior Trans Crestal
38mm x 38mm



Ti-250 XL
30mm x 40mm



Ti-250 XLK
30mm x 40mm

Cytoplast™ Titanium-Reinforced Dense PTFE
Membrane size reference

DENTAL MEMBRANES

Cytoplast™ Dense PTFE Membranes

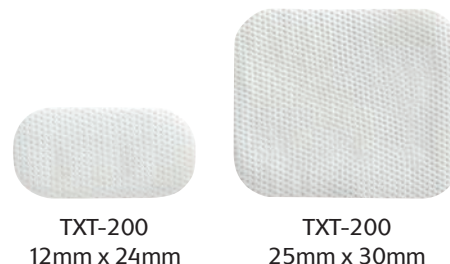
The micro-textured TXT-200 & TXT-200 Singles provide a textured surface to increase the area available for cellular attachment without increasing porosity. (200 microns thick)

- patented Regentex™ surface for increased stability
- impervious to bacteria (membrane pore size less than 0.3 microns)
- designed to withstand exposure for easy, non-surgical removal
- for socket grafting and grafting where primary closure is not possible



ordering information

OG-TXT1224-1	Cytoplast™ TXT-200 Singles 12mm x 24mm
OG-TXT1224	Cytoplast™ TXT-200 Singles (pack of 10) 12mm x 24mm
OG-TXT2530-1	Cytoplast™ TXT-200 25mm x 30mm
OG-TXT2530	Cytoplast™ TXT-200 (pack of 4) 25mm x 30mm



Cytoplast™ Dense PTFE
Membrane size reference

Dental Membrane Applications

	graft protection & containment	sinus lift	ridge preservation	bony defects
Mem-Lok® RCM	✓	✓	✓	✓
Mem-Lok® Pliable	✓		✓	✓
Mem-Lok® Pericardium	✓		✓	✓
Cytoplast™ TXT-200 & TXT-200 Singles	✓		✓	✓
Cytoplast™ Ti-250	✓		✓	✓

RECOMMENDED SUTURES

Cytoplast™ PTFE Sutures



- manufactured using 100% non-resorbable, medical grade PTFE for a biologically inert suture that prevents bacterial wicking into surgical sites
- 300 series stainless steel needle, provides a substantial increase in needle strength as well as initial and sustained needle sharpness
- soft monofilament ensures little to no package memory for excellent handling, secure knots and increased patient comfort

16mm
3/8 Circle Precision Reverse Cutting
USP 4-0



OG-CS-0618RC

For dental implant and bone grafting procedures. Designed to have longer and geometrically finer precision cutting edges.

13mm
3/8 Circle Precision Reverse Cutting
USP 4-0



OG-CS-0618PREM

For dental implant and bone grafting procedures where a smaller reverse cutting needle is desired. Designed to have longer and geometrically finer precision cutting edges.

19mm
3/8 Circle Reverse Cutting
USP 3-0



OG-CS-051819

Most popular needle in dentistry and most popular suture size.

16mm
3/8 Circle Reverse Cutting
USP 3-0



OG-CS-0518

Most popular size for dental implant and bone grafting procedures.

RECOMMENDED SUTURES

Hu-Friedy® Sutures



- 300 series stainless steel, the ideal alloy for dental suture needles, ensures a strong sharp needle pass after pass
- manufactured from a stronger alloy composition, increasing ductile strength - if the needle does bend, it is less likely to break when reshaping
- finer point geometry for smooth tissue penetration, requiring up to 20% less force* than other suture needles
- laser-drilled needles for reduced tissue disruption

Dr. Edward P. Allen's Recommended Sutures

For use in oral plastic surgery procedures



HF-PSN1816C

Perma Sharp® Suture

6-0 Chromic Gut 18", C-1 Premium.
Finer point geometry for smoother penetration.



HF-PSN8697P

Perma Sharp® Suture

6-0 Polypropylene 18", C-1 Premium.
Finer point geometry for smoother penetration.



HF-PSN8696P

Perma Sharp® Suture

7-0 Polypropylene 18", C-1 Premium.
This suture is used to secure coronally positioned flap / pouch over the graft.



HF-PSN8384P

Perma Sharp® Suture

6-0 Polypropylene 18", C-17.
Finer point geometry for smoother penetration.

Dr. Carl E. Misch's Recommended Sutures

For use in implant and bone graft related procedures



HF-PSN460V

Perma Sharp® Suture

3-0 Violet PGA Suture. 27", C-9.
Finer point geometry for smoother penetration.



HF-PSN392V

Perma Sharp® Suture

4-0 Violet PGA Suture. 18", C-6.
Finer point geometry for smoother penetration.

*Data on file at Hu-Friedy®

Allen Oral Plastic Surgery Kit



HF-ALLENKIT

Developed by Dr. Edward P. Allen, this comprehensive kit provides precision microsurgical instruments specifically designed for invasive soft tissue grafting procedures.

HF-IMN4160 16 Instrument Infinity Series Cassette

HF-IM1000 Sig. Series Hinged Instrument Clip, 2 pack

HF-NHM-5026R Micro Castroviejo, Straight, Diamond Dusted



HF-S5080 Goldman-Fox Perma Sharp® Scissors, Straight



HF-PPAELPX Allen Periosteal Elevator, Posterior, Black Line



HF-PPAELAX Allen Periosteal Elevator, Anterior, Black Line



HF-KPAX Allen End-Cutting Intracuticular Knife, Black Line



HF-SYG7/89E2 Younger-Good 7/8, #9 Handle, EverEdge® (2 per kit)



HF-MCUPE Immunity Steel Cup, Modified (2 per kit)



HF-KO12KPO3R9 Allen Modified Orban Knife 1/2, Round, EverEdge®



HF-SYRCW Cook-Waite Anesthetic Aspirating Syringe, 1.8ml



HF-10-130-05 #5 Scalpel Handle, Round, Straight



HF-PCP116 Color-Coded Probe 3-6-8-11



HF-SP20 Corn Suture Pliers



HF-8-905DD Precision Dressing Forceps, Diamond Dusted



HF-MIR5/3 #5 Front Surface Mouth Mirror, 3 pack

HF-MH6 #6 Satin Steel® Mirror Handle (2 per kit)



HF-PPAELX Allen Periosteal Elevator, Black Line



HF-ALLENCARD Allen Membrane Measurement Card



HF-KO12KP3R49 Allen Arrowhead Knife, EverEdge®



additional items available individually

HF-KO12KPO3AR Allen Modified Orban Knife 1/2, Round, #6 Satin Steel® Handle



Basic Hard Tissue Grafting Kit

HF-IMP MOODYK

Developed by Dr. Nico Geurs & Dr. Justin Moody, this comprehensive kit provides essential instrumentation for standard hard tissue grafting applications.



HF-CSEUWES6 Euwe Bone Scoop/Plugger, #6 Satin Steel® Handle



HF-IM8121C4 Gray Signa-Stat, 4 clips

HF-CL856 #85 Lucas DE Surgical Curette, #6 Satin Steel® Handle



HF-CRM Retractor University of Minnesota



HF-MIR5HD #5 High Definition Cone Socket Mirror, Single Sided (1 per kit)



HF-MH6 #6 Satin Steel® Mirror Handle



HF-P24GSP6 #24G Periosteal, #6 Satin Steel® Handle



HF-DP17 #17 Dressing Pliers



HF-NH5038 Crile-Wood Perma Sharp® Needle Holder



HF-F1XS #1 Atraumair Extraction Forceps



HF-PCP126 Color-Coded SE Probe 3-6-9-12, #6 Satin Steel® Handle



HF-S18 Iris Scissors, Curved



HF-CM116 #11 Miller Bone Curette, #6 Satin Steel® Handle



HF-10-130-05 #5 Scalpel Handle, Round Straight



INSTRUMENTS

Allen/Johnston Suture Removal Kit

HF-AJSRKIT

Dr. Edward P. Allen, a recognized expert in periodontal surgery, and Shanon Johnston, a CDA, has designed this complete suture removal kit. Microsurgery has recently been introduced into oral plastic surgery. Among the benefits are refined instruments and materials, which allow for finer, more precise surgical procedures that can result in predictable outcomes.



Titanium Tack Driver System

The titanium tack driver system is used for the fixation of barrier membranes and soft tissue in the oral cavity. The system was designed with a durable, long-lasting driver handle with a strong, tack-retaining feature to reduce lost tacks.

BSMTDR Manual Tack Driver



BSMTDRT Replacement Tack Driver Tip



AutoTac® System Kit

The AutoTac® System Kit is used to secure membranes with the push of a button. The efficient "no touch" tack system with a convenient one-handed delivery mechanism effectively fixates membranes.

400-270 AutoTac® System Kit includes:

- sterilization tray
- autoclavable tack cassette (pre-loaded with 21 titanium tacks)
- dressing pliers, utility pick-up
- delivery handle



Re-Order Items

400-248 autoclavable tack cassette (tacks not included)

400-240 titanium tack vial (pack of 5)

400-260 titanium tacks with cassette (pack of 21)

HF-DPU17 dressing pliers, utility pick-up

Crestal-Lift-Control Basic Kit

The Crestal-Lift-Control system supports safe and easy access for internal sinus lift procedures.

MS-BCLBA2 Crestal-Lift-Control Basic Kit includes:

- 2.0 pilot drill for initial engagement of bone
- 3.3/3.6/3.8/4.1mm diameter side cutting crestal drills
- 3mm-9mm depth stops for accurate access
- graft spreader to assist with sinus membrane elevation and placement of graft material



Bone Fixation Screw Kit

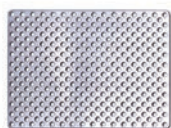
Indicated for use in fixation of cortical onlay grafts and meshes and for membrane tenting used in Guided Bone Regeneration. The kit is compact and conveniently organized for efficient retrieval of instruments and screws. It includes cortical bone drills for both latch-type and friction-grip handpieces.

160-900 Bone Fixation Screw Kit includes:

- flexible micro mesh
- screwdriver body
- comprehensive instrument set
- autoclavable screw block with lid
- 24 screws:
 - (6) 1.4mm x 8.0mm micro screws
 - (6) 1.4mm x 10.0mm micro screws
 - (6) 2.0mm x 10.0mm mini screws
 - (6) 2.0mm x 12.0mm mini screws



Bone Fixation Screw Kit Re-Order Items



BSV-14X4

1.4mm x 4.0mm micro screw (pack of 6)

BSV-14X6

1.4mm x 6.0mm micro screw (pack of 6)

BSV-14X8

1.4mm x 8.0mm micro screw (pack of 6)

BSV-14X10

1.4mm x 10.0mm micro screw (pack of 6)

BSV-14X12

1.4mm x 12.0mm micro screw (pack of 6)

BSV-2X8

2.0mm x 8.0mm mini screw (pack of 6)

BSV-2X10

2.0mm x 10.0mm mini screw (pack of 6)

BSV-2X12

2.0mm x 12.0mm mini screw (pack of 6)

BSV-2X14

2.0mm x 14.0mm mini screw (pack of 6)

BS-MMESH

micro mesh for guided bone regeneration
24.0mm x 35.0mm, 0.1mm thick

BS-MCSSFT-HND

micro screwdriver shaft for screwdriver body

BS-MCSSFT-ANG

micro screwdriver shaft for latch-type handpieces

BS-1MCD-B-ANG

1.0mm micro drill bit for latch-type handpieces

BS-MNSSFT-HND

mini screwdriver shaft for screwdriver body

BS-MNSSFT-ANG

mini screwdriver shaft for latch-type handpieces

BS-16MMDB-ANG

1.6mm mini drill bit for latch-type handpieces

BS-16X54.8MDB-STR

1.6 x 54.8mm mini drill bit for friction-grip handpieces (Ø2.35mm)

BS-16X67MDB-STR

1.6 x 67.0mm mini drill bit for friction-grip handpieces (Ø2.35mm)

BS-SDRIVER

screwdriver body

NOTES

[illegible]

REFERENCES

References

1. Reference manufacturer's Instructions for Use (IFU) package insert.
2. Histologic analysis of implant sites after grafting with demineralized bone matrix putty and sheets. Callan, D.P., Salked, S.L., Scarborough, N.L. *Implant Dent.* 2009;9(1):36-42.
3. Grafton DBM forms and Grafton Plus DBM Paste are FDA 510(k) cleared for use as a bone void filler, bone graft extender and bone graft substitute.
4. FDA 510(k) K051188 and K051195 Indications for Use statements and summaries of safety and effectiveness for use as a bone void filler, bone graft extender and bone graft substitute.
5. Data on file with the manufacturer.
6. Post-operative complications following gingival augmentation procedures. Griffin T, Cheung W, Zavaras A, Damoulis P. *Journal of Periodontology.* December 2006.
7. Acellular dermal matrix for mucogingival surgery: a meta-analysis. Gapski R, Parks CA, Wang HL. *J Periodontol.* 2005 Nov;76(11):1814-22.
8. A 2-year follow-up of root coverage using subpedicle acellular dermal matrix allografts and subepithelial connective tissue autografts. Hirsch A, Goldstein M, Goultschin J, Boyan BD, Schwartz Z. *J Periodontol.* 2005 Aug;76(8):1323-28.
9. Acellular dermal matrix graft as a membrane for guided bone regeneration: a case report. AB Novaes, SL Souza. *Implant Dent.* 2001;10(3):192-195.
10. Management of localized buccal dehiscence defect with allografts and acellular dermal matrix. Park, Sang-Hooh, Wang, Hom-Lay. *The International Journal of Periodontics & Restorative Dentistry.* 2006;(26):589-594.
11. Acellular dermal matrix as a barrier in guided bone regeneration: a clinical, radiographic and histomorphometric study in dogs. Borges, G.J., Novaes, A.B. Jr, de Moraes Grisi, M.F., Palioto, D.B., Taba, M. Jr, de Souza, S.L.S. *Clin. Oral Impl. Res.* 2009.
12. Prediction of *in vivo* stability of a resorbable, reconstituted type I collagen membrane by *in vitro* methods. Ulreich JB, Zuclich G, Lin HB, Li ST. *2000 Society World Biomaterials Congress Transactions, Sixth World Biomaterials Congress Transactions.*
13. A resorbable, reconstituted type I collagen membrane for guided tissue regeneration and soft tissue augmentation. Yuen D, Junchaya C, Zuclich G, Ulreich JB, Lin HB, Li ST. *Society for Biomaterials.* 2000;1228.
14. Heat production by 3 implant drill systems after repeated drilling and sterilization. Chacon GE, Bower DL, Larsen PE, McGlumphy EA, Beck FM. *J Oral Maxillofac Surg.*

ORDERING & WARRANTY INFORMATION

Territory Manager: _____

cell phone: _____

email and/or fax: _____

BioHorizons Lifetime Warranty on Implants and Prosthetics: All BioHorizons implants and prosthetic components include a Lifetime Warranty. BioHorizons implant or prosthetic components will be replaced if removal of that product is due to failure (excluding normal wear to overdenture attachments).

Additional Warranties: BioHorizons warranties surgical drills, taps and other surgical and restorative instruments.

(1) Surgical Drills and Taps: Surgical drills and taps include a warranty period of ninety (90) days from the date of initial invoice. Surgical instruments should be replaced when they become worn, dull, corroded or in any way compromised. Surgical drills should be replaced after 12 to 20 osteotomies.¹⁴

(2) Instruments: The BioHorizons manufactured instrument warranty extends for a period of one (1) year from the date of initial invoice. Instruments include drivers, implant site dilators and BioHorizons tools used in the placement or restoration of BioHorizons implants.

Return Policy: Product returns require a Return Authorization Form, which may be acquired by contacting Customer Care. The completed Return Authorization Form must be included with the returned product. For more information, please see the reverse side of the invoice that was shipped with the product.

Disclaimer of Liability: BioHorizons products may only be used in conjunction with the associated original components and instruments according to the Instructions for Use (IFU). Use of any non-BioHorizons products in conjunction with BioHorizons products will void any warranty or any other obligation, expressed or implied.

Treatment planning and clinical application of BioHorizons products are the responsibility of each individual clinician. BioHorizons strongly recommends completion of postgraduate dental implant education and adherence to the IFU that accompany each product. BioHorizons is not responsible for incidental or consequential damages or liability relating to use of our products alone or in combination with other products other than replacement or repair under our warranties.

Distributed Products: For information on the manufacturer's warranty of distributed products, please refer to their product packaging. Distributed products are subject to price change without notice.

Validity: Upon its release, this literature supersedes all previously published versions.

Availability: Not all products shown or described in this literature are available in all countries. BioHorizons continually strives to improve its products and therefore reserves the right to improve, modify, change specifications or discontinue products at any time.

Any images depicted in this literature are not to scale, nor are all products depicted. Product descriptions have been modified for presentation purposes. For complete product descriptions and additional information, visit store.biohorizons.com.

Direct Offices

BioHorizons USA
888-246-8338 or
205-967-7880

BioHorizons Canada
866-468-8338

BioHorizons Spain
+34 91 713 10 84

BioHorizons UK
+44 (0)1344 752560

BioHorizons Chile
+56 (2) 23619519

BioHorizons Italy
800-063-040

Distributors

For contact information in our 90 countries, visit www.biohorizons.com



BioHorizons®, Laser-Lok®, MinerOss®, AutoTac®, Mem-Lok® and TeethXpress® are registered trademarks of BioHorizons. Unigrip™ is a trademark of Nobel Biocare AB. Zimmer® Dental ScrewVent® and Tapered ScrewVent® are registered trademarks of Zimmer, Inc. AlloDerm™ and AlloDerm GBR™ are trademarks of LifeCell Corporation, an Allergan affiliate. Grafton® DBM is a registered trademark of Medtronic, Inc. Cytoplast® is a registered trademark of Osteogenics Biomedical, Inc. Puros Dermis is a registered trademark of Zimmer Biomet. Mucograft is a registered trademark of Ed. Geistlich Sogne AG Fur Chemische Industrie. Symbios PerioDerm is a registered trademark of Dentsply Sirona. Spiralock® is a registered trademark of Spiralock Corporation. Pomalux® is a registered trademark of Westlake Plastics Co. Locator® is a registered trademark of Zest Anchors, Inc. Delrin® is a registered trademark of E.I. du Pont de Nemours and Company. Bio-Gide® is a registered trademark of Edward Geistlich Sohne AG Fur Chemische Industrie. BioMend® is a registered trademark of Zimmer Biomet Dental. Not all products shown or described in this literature are available in all countries. As applicable, BioHorizons products are cleared for sale in the European Union under the EU Medical Device Directive 93/42/EEC and the tissues and cells Directive 2004/23/EC. We are proud to be registered to ISO 13485:2003, the international quality management system standard for medical devices, which supports and maintains our product licences with Health Canada and in other markets around the globe. Original language is English. ©BioHorizons. All Rights Reserved.



ML0203



REV N AUG 2018

shop online at
store.biohorizons.com